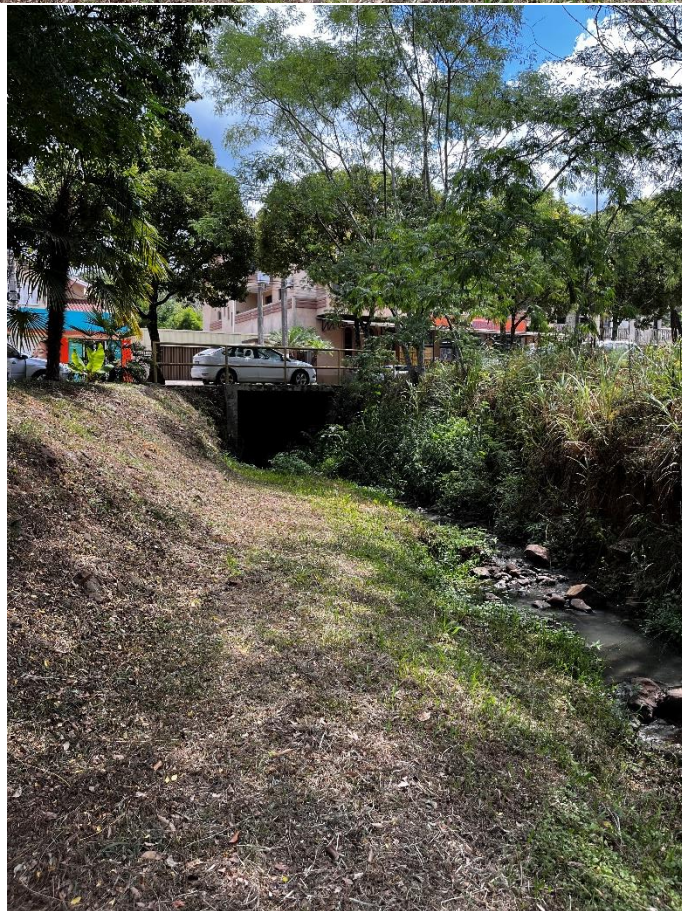


PONTO	COORDENADAS	LÂMINA D'ÁGUA	LARGURA DO RIO	ALTURA DO TALUDE
1	28°43'10"S 51°55'41"W	8,75CM	5,30M	1,40M
2	28°43'10"S 51°55'40"W	12CM	4,20M	0,96M
3	28°43'8"S 51°55'40"W	14CM	12M	2,10M
4	28°43'9"S 51°55'39"W	16,5CM	12M	2,53M
5	28°43'11"S 51°55'37"W	50CM	10M	2,33M
6	28°43'15"S 51°55'34"W	17,5CM	7M	2,58M
7	28°43'14"S 51°55'30"W	31CM	8M	2,69M
8	28°43'19"S 51°55'23"W	55CM	10M	2,63M
9	28°43'23"S 51°55'19"W	35CM	6,50M	2,55M

**Este documento foi  
digitalizado e confere  
com o original.**

## PONTO 1



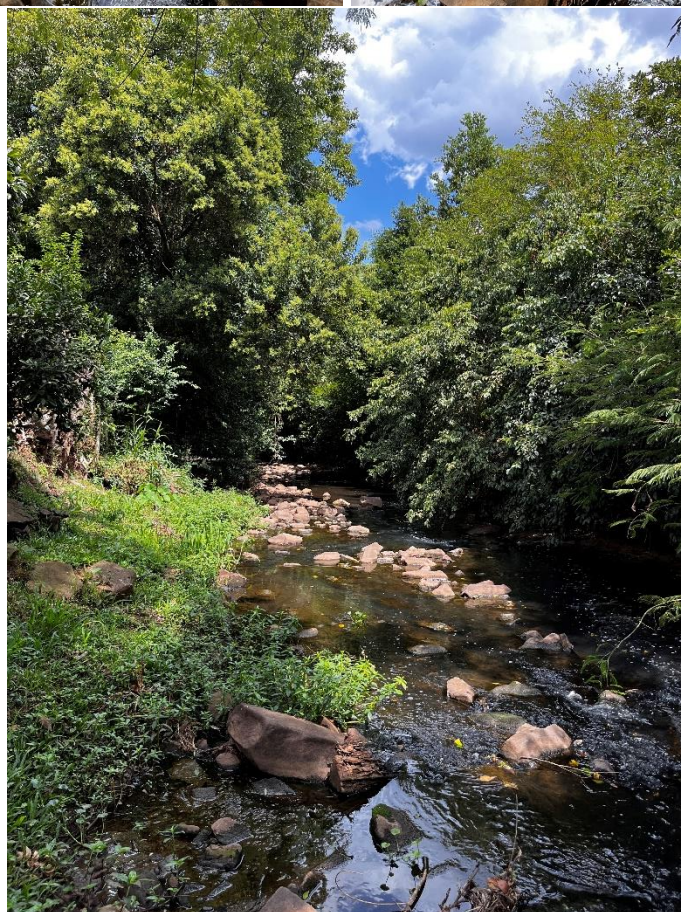
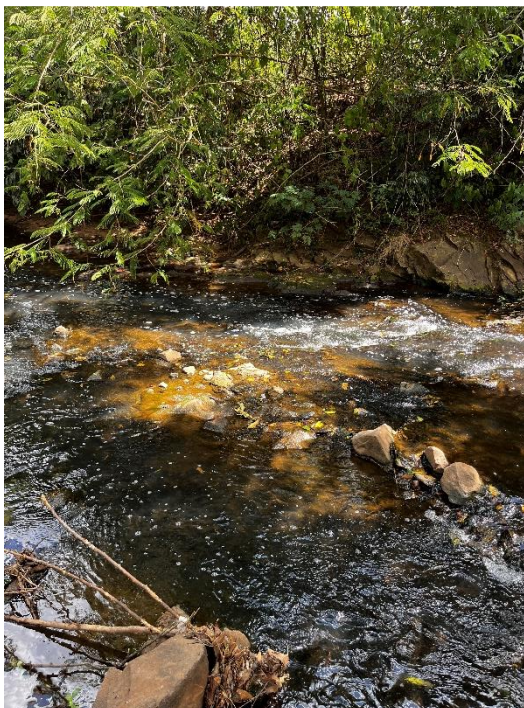
**PONTO 2**



**PONTOS 1 E 2**



### PONTO 3



## PONTO 4



## PONTO 5

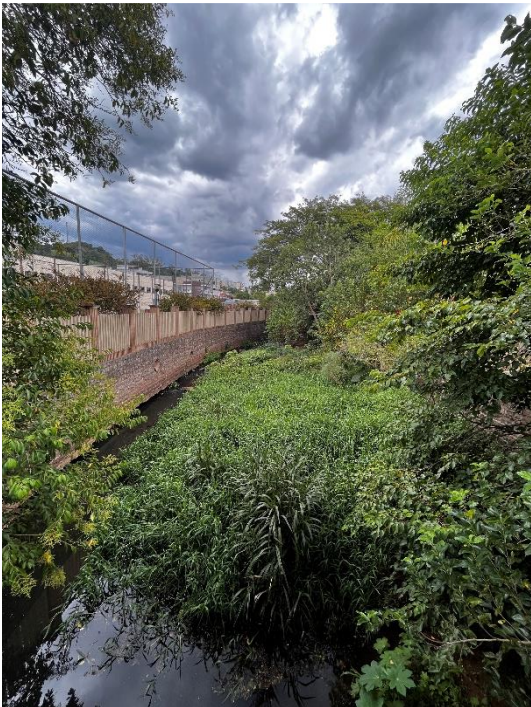


## PONTO 6



## TRECHO ENTRE OS PONTOS 5 E 6

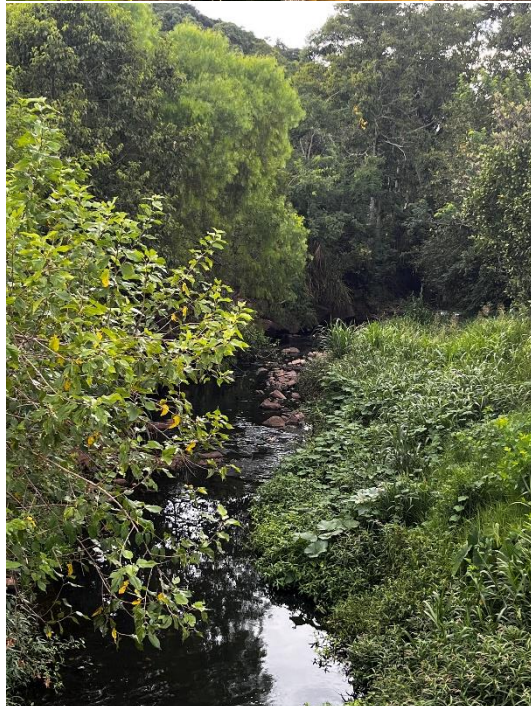
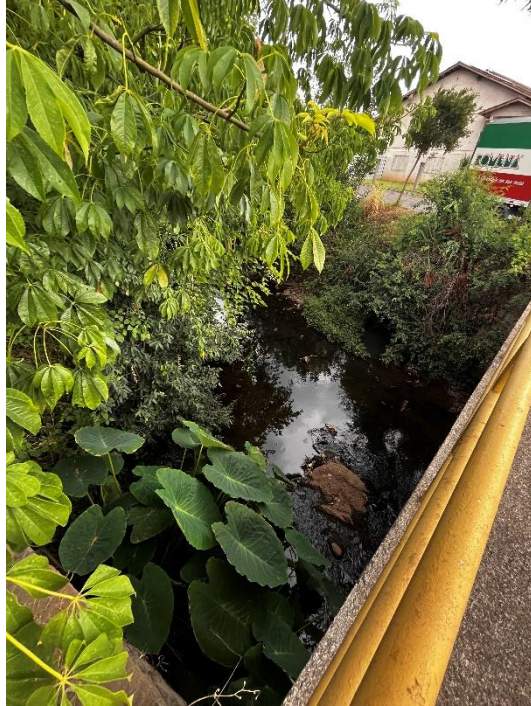
A porção compreendida entre os pontos 5 e 6 da amostragem, vê-se, é uma área murada, com muro de 3,40 de altura.



## PONTO 7



## PONTO 8



## PONTO 9

